



Canton Regional Society of Professional Engineers PEN

JANUARY 2019

OFFICERS:

President:

Rick Buchanan, P.E.

President Elect:

Jennifer Schumacher

Vice President:

Michael Ferncez, P.E.

Treasurer:

Tim Boron, P.E.

Secretary:

John Rice, P.E.

Trustees:

Ryan Athy, P.E.

Scott Dilling, P.E.

Bob Fonte, P.E.

Charles Hammontree, P.E.

Jennifer Kelley, P.E.

Jeff Kennedy, P.E.

Scholarship:

Bob Fonte, P.E.

Program & Hosp.:

Rick Buchanan, P.E.

Legislative:

Jeff Kennedy, P.E.

Mathcounts:

Tim Boron, P.E.

Ryan Athy, P.E.

Coloring Contest:

Scott Dilling, P.E.

Publicity:

Jennifer Kelley, P.E.

Canton Joint Engineering Council 2019 National Engineer's Week Banquet

Wednesday, February 20, 2019

Skyland Pines Lodge
3550 Columbus Road NE,
Canton, OH 44705



Advanced Technology in Engineering Surveys

Mr. Gary Schuller, M.S., P.S.

Professor & Program Director, Surveying & Mapping
The University of Akron

Cost: \$30 per person (\$35 after February 11, 2019)

Last day for reservations: Friday, February 15, 2019

Reservation will not be confirmed until payment is received, unless other arrangements have been made.

Menu: Choice of Scrod, Steak, or Vegetarian.

Meal includes: bread, dinner salad, baked potato, rigatoni, green peppers, sherbet dessert, and beverage.

Online Registration/Payment: <http://www.cjecnet.com/eweek/banquet.htm>

For Questions Contact: Mr. Scott Dilling, P.E.

Phone: 330-354-9241, Email: tickets@cjecnet.com

Times:

Cash Bar: 6:00pm

Dinner: 7:00pm

Program: 8:00pm

Upcoming Events

February 1, 2019—The Engineer as Leader Seminar (OPSE), Columbus, OH

February 9, 2019 — MathCounts Ashland and Canton, OH

February 20, 2019 — National Engineer's Week Banquet

March 12, 2019—Rayco Manufacturing Tour

June 6-8, 2019—All Ohio Engineering Conference (OSPE), Perrysburg, OH

July 20, 2019 — CRSPE Golf Outing at Skyland Pines

CRSPE Scholarships

The Canton Regional Society of Professional Engineers (CRSPE) is offering our annual Grant-in-Aid scholarships to engineering students whose legal residence is in Stark County, Ohio. Students may obtain an application on the Canton Joint Engineering Council's website at www.cjecnet.com, looking under "Member Societies", or by emailing Robert Fonte at bfonte@starkparks.com.

Applications are due June 1, 2019 by mail to Robert Fonte, PE, 5005 Plain Center Avenue NE, Canton, Ohio 44714. For further information, feel free to contact Robert Fonte.



CRSPE has recently donated \$1600 into the principal of CRSPE's College Fund maintained by the Stark Community Foundation in memory of recently deceased CRSPE Past Presidents and active Board members, Rich LaRocco, PE, PS and Ray Haas, PE. If you would also like to make a donation into CRSPE's College Fund in memory of Rich and/or Ray, please contact Tim Boron (tboron@nfm.net) for more information on how to donate.

Help Future Scholarship applicants!

Donate to the CRSPE Scholarship fund at The Stark Community Foundation

Make checks payable to "The CRSPE College Scholarship Fund

c/o The Stark Community Foundation"

Mail to: Stark Community Foundation,

400 Market Ave. N.,

Suite 200, Canton, Ohio 44702

Navy Recruitment

The U.S. Navy is looking for engineers with three to five years' experience to join the Nave Reserve. Interested candidates can obtain information on Navy Recruiting District Ohio's website at <http://www.cnrc.navy.mil/pages-nrd/ohio/default.html>, or by contacting Lieutenant Patrick Finlin at email: Patrick.finlin@navy.mil, phone: 216-618-8453.

Candidates should not be older that 42 years of age unless they have had prior service which has a limit of 50 years of age.

CRSPE Member Legislators

If a citizen wants to determine who their Ohio House, Ohio Senate or U.S. House of Representatives member is, please check the following websites:

Ohio House Representative: <http://www.ohiohouse.gov/>

Ohio State Senator: <http://www.ohiosenate.gov/senators/district-map>

Ohio House or Senate: <https://www.legislature.ohio.gov/legislators/find-my-legislators>

U.S. House Representative: <https://www.house.gov/representatives/find-your-representative>

Ohio's U.S. Senators are Sherrod Brown (<https://www.brown.senate.gov/#main-nav>) and Rob Portman (<https://www.portman.senate.gov/public/>)

To save CRSPE members some time, the Ohio House, Ohio Senate, U.S. House and U.S. Senate members are listed below.

Our OSPE lobbyist has suggested that our members take a few moments and introduce themselves to their elected legislators. A personal, hand-written or typed letter means much more than a form letter with our name and address added. It's important for us to get to know our legislators, whether we voted for them or not, because, like it or not, they represent US. We can be an asset to them on issues important to professional engineering and other topics. It's important for us to develop professional relationships with as many of our elected representatives as we can.

COUNTY	OHIO STATE HOUSE REP & DISTRICT	OHIO STATE SENATOR & DISTRICT	U.S. HOUSE REP(S) & DISTRICT(S)	U.S. SENATORS
Ashland	Darrell Kick (Rep) - District 70	Larry Obhof (Rep) - District 22	Bob Gibbs (Rep) - District 7	Sherrod Brown (Dem) & Rob Portman (Rep)
Crawford	Riordan McClain (Rep) - District 87	Dave Burke (Rep) - District 26	Jim Jordan (Rep) - District 4	Sherrod Brown (Dem) & Rob Portman (Rep)
Richland	Mark Romanchuk (Rep) - District 2	Larry Obhof (Rep) - District 22	Bob Gibbs (Rep) - District 7 or Troy Balderson (Rep) - District 12***	Sherrod Brown (Dem) & Rob Portman (Rep)
Stark	Marilyn Slaby (Rep) - District 38, Kirk Schuring (Rep) - District 48, Thomas West (Dem) - District 49 or Christina Hagan (Rep) - District 50*	Frank LaRose (Rep) - District 27 or Scott Oelslager (Rep) - District 29**	Bob Gibbs (Rep) - District 7, Tim Ryan (Dem) - District 13 or Anthony Gonzalez (Rep) - District 16***	Sherrod Brown (Dem) & Rob Portman (Rep)
Wayne	Scott Wiggam (Rep) - District 1	Frank LaRose (Rep) - District 27	Anthony Gonzalez (Rep) - District 16	Sherrod Brown (Dem) & Rob Portman (Rep)

* - For your Ohio State Representative, please see <http://www.ohiohouse.gov/>

** - For your Ohio State Senator, please see <http://www.ohiosenate.gov/senators/district-map>

*** - For your U.S. Representative, please see <https://www.house.gov/representatives/find-your-representative>

(Dem) = Democratic Party

(Rep) = Republican Party

Member Spotlight



1.) **Name:** Jennifer Kelley

2.) **Current Place of Residence:** Canton, OH

3.) **Current Employer:** IBI Group

4.) **Educational Background:** B.S. Civil Engineering (2009), University of Akron
M.S. Civil Engineering (2010), University of Akron .

5.) **Engineering Discipline:** Civil Engineering – Transportation

6.) **What or who inspired you to become an Engineer?** My father is a Mechanical Engineer and my grandfather was a Metallurgical Engineer, so I was exposed to the profession of Engineering at a very young age. When I was older, I had my first experience in a “big city” when my family visited Boston on vacation. I was fascinated with the subway system and infrastructure of the city, and I had the realization that someone designed all of that and made it work together to keep the city going. When I was in high school, we visited Las Vegas, and observing the unique traffic congestion issues that were occurring there got me interested in Transportation Engineering

7.) **Are you currently a licensed P.E., or are you on the path to licensure?** I am a licensed P.E

8.) **Why was it important to you to obtain a P.E. license?** As a student at the University of Akron, we were highly encouraged to become licensed Professional Engineers, so I have always considered licensure to be a necessary component of my career. On a personal level, obtaining my license was important to me, because I feel that it is an indication of one’s credibility and proficiency in their field. At the beginning of engineering school, I was told by one of my professors that I may not be cut out to be an engineer. Obtaining my license was a personal goal that allowed me to demonstrate that I am cut out to be an engineer

9.) **When did you become involved with CRSPE?** I began serving as a Trustee in 2013.

10.) **What encouraged you to become involved with CRSPE?** My former employer notified me of a vacant position on the Board of Trustees, and encouraged me to join.

11.) **What do you feel is the most valuable benefit provided by CRSPE?** One benefit provided by CRSPE that I have really enjoyed is the opportunity for multi-disciplinary networking. Many other professional organizations cater to individual engineering disciplines, but I really like that CRSPE creates a sense of community amongst all local Professional Engineers.

12.) **Would you like to share anything else about yourself (family, hobbies, professional achievements etc.)?** My husband Ryan and I enjoy traveling and spending time with our dog Codie. To maintain balance in my life and to get a break from the logical/analytical world of engineering, I enjoy pursuing creative hobbies such as participating in a local dance performance troupe, and playing the piano and ukulele.

March Meeting



Manufacturing Facilities Tour

CRSPE members are invited to attend a brief presentation and plant tour of Rayco Manufacturing in Wooster, Ohio. Rayco Manufacturing has produced environmental, forestry, landscaping, and construction equipment since 1978.

Tuesday, March 12, 2019



Rayco Manufacturing
4255 E. Lincoln Way
Wooster, OH 44691-8601



1:00 PM – 2:00 PM – presentation and plant tour

1.0 PDH awarded for attendance

Cost: There is no cost for this tour

Safety Advisory: Attendees should be wearing closed-toe shoes and full length pants (no shorts). Safety glasses will be provided.

Please note: Lunch will not be provided. It is recommended that attendees have lunch before the tour.

Please RSVP by Tuesday, March 5, 2019 to Jennifer Kelley at jennifer.kelley@ibigroup.com or 330-491-9000



EFO volunteer Jennifer Schumacher PE, LEED-AP, presents second grade student Lily Wenning of St. Joan of Arc School (Canton) with a big screen microscope—the second place prize for the Imagine Engineering Coloring Contest. *Picture courtesy of EFO.*

MATHCOUNTS

Canton MATHCOUNTS will be on Saturday, February 9, 2019 at 9:00 AM at the Stark Parks Exploration Gateway. Ashland MATHCOUNTS will be from 8AM-1PM on Saturday, February 9, 2019 at the Ashland University Hawkins-Conard Student Center. Volunteers to assist with grading/scoring are always appreciated!

Please contact Jennifer Kelley at Jennifer.kelley@ibigroup.com if you would be interested in helping.

Please specify if you are available to help with the Canton event or the Ashland event.

Did You Know?



CRSPE is now on Facebook! Stay up to date on upcoming events and network with other local PEs. Type **@CRSPEOhio** or **Canton Regional Society of Professional Engineers** into the search bar and follow our page.

CPD Credits for Officers

One year of service as an officer or active committee member of a professional or technical society or association is worth 2 CPD hours. Please contact Rick Buchanan at rlbuchanan@neo.rr.com. if you would like to get involved with the CRSPE Board of Trustees.

Attention CRSPE Members:

Please share ideas for any programs that you would like to attend in 2018. Any leads for potential speakers or members who would like to volunteer or present would be appreciated. Please email your ideas to Rick Buchanan at rlbuchanan@neo.rr.com.



CRSPE Newsletter

Jennifer Arn
Phone: 330-313-4346
Email: reyabj@gmail.com

We're on the Web!

<http://ohioengineer.com/index.php/>

[Become-a-Member/Canton-Regional](#)

Would you like to support the PEN - your Professional Engineering Newsletter?
For \$10 a month, we will display your business card here.
Contact Jenn Kelley at jennifer.kelly@ibigroup.com for more information.



**HAMMONTREE
& ASSOCIATES, LIMITED**

ENGINEERS • PLANNERS • SURVEYORS

Professional Service Since 1966

Charles F. Hammontree, P.E., P.S.
Chairman and C.E.O.

5233 Stoneham Road • North Canton, OH 44720

Phone: 330.499.8817 • Fax: 330.499.0149
1.800.394.8817

www.hammontree-engineers.com



ENGINEERING SALES, INC.

Electrical Power and Instrumentation Equipment Representatives

RALPH K. LEIDY, P.E.

MANUFACTURER'S REPRESENTATIVE

T: 330/497-9585 • F: 330/497-0318 • C: 330/418-4072

127 SOUTH MAIN ST. • NORTH CANTON, OH 44720
EMAIL LEIDYNCTN@AOL.COM • WEBSITE: WWW.LEIDYSALES.COM

RICHARD L. BUCHANAN, P.E.



Electrical Forensic Expert

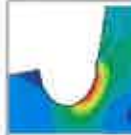
Specializing in:

- Electric Utility Distribution Systems
- Electric Utility System Planning
- Electrocutions
- Overhead and Underground Line Design
- Power Quality
- Stray Voltage
- Utility Rates

6914 Asbury Cir., N.E.
Canton, OH 44721-3863

Phone: (330) 497-8260
Cell: (330) 283-0708
Fax: (866) 861-3301

E-mail: R.Buchanan@ieee.org



**DILLING ENGINEERING
SERVICES, LLC**

Product Design • CAD Modeling • FEA Modeling • Patent •
Drawing Preparation • Technical Expert • Training • Teaching • Seminars

Scott A. Dilling, P.E.

Engineering Consultant

• Registered Professional
Engineer in Ohio

• Registered Patent Agent
with the USPTO

Dilling Engineering Services, LLC
6391 Harborview Ave. N.W.
Canton, Ohio 44718
www.dilling.eng.pro

Cell: (330) 354-9241
Fax: (330) 966-7251
scott@dilling.eng.pro